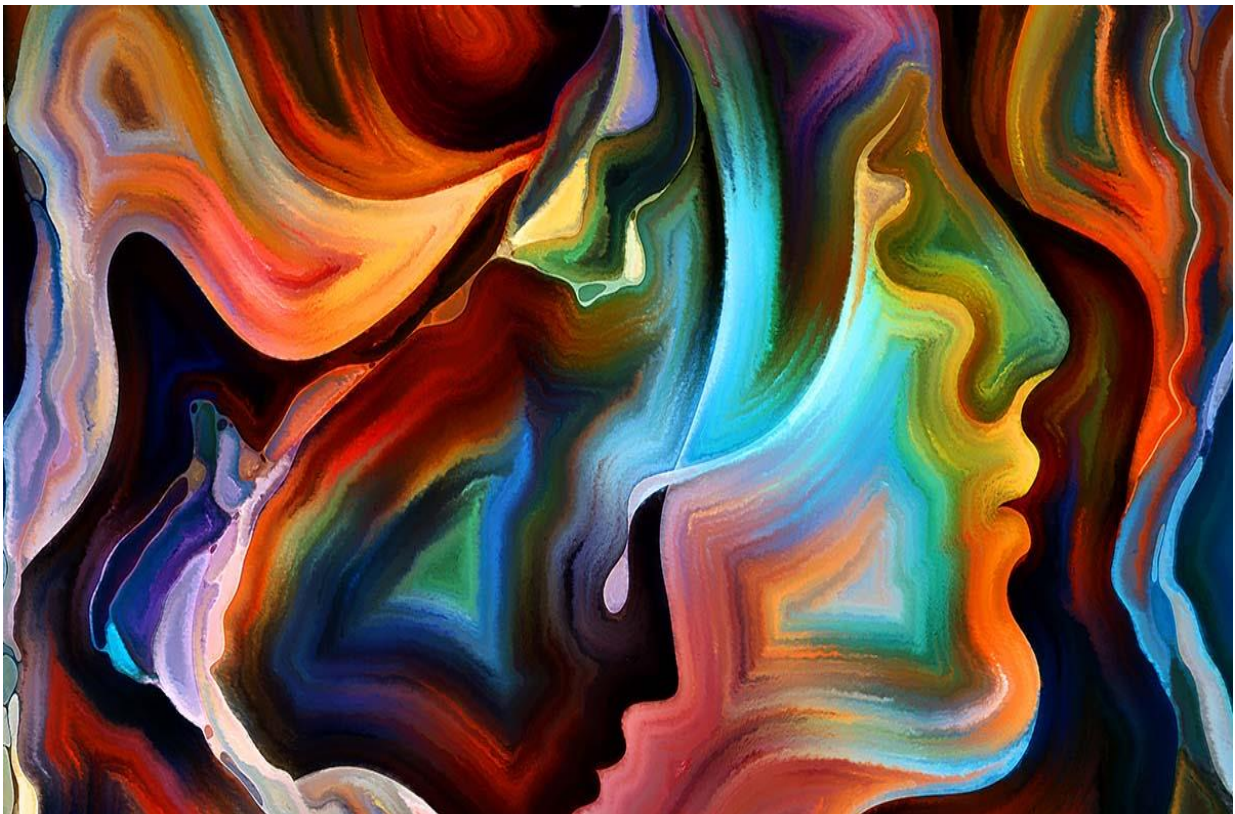


Specification for the Diploma in Psychology



Thank you for enquiring about our Access to Higher Education Diplomas in Psychology. This booklet will provide you with the following details:

- | | |
|------------------------------------------------------------------|----------|
| 1. The detail of the units you would study on the diploma | 3 |
| 2. Progression Information | 6 |
| 3. Testimonials from our learners | 7 |
| 4. Your next steps to joining us | 8 |

Psychology

Qualification Code: 40012335

Unit of Study	Unit Value	Achievement & Comments
Communication: Academic Essay Writing [3]	3	This is an ungraded unit so you can only achieve this at pass level. To achieve this you must create 3 essay plans and submit them to your tutor. The assignment brief for this unit is in the Google Classroom 'Developmental Ungraded Units, and you will be given access to this remote learning space during your application process.
Communication: Presentation Skills [3]	3	This is an ungraded unit so you can only achieve this at pass level. To achieve this you must undertake one oral presentation of a unit of study. The assignment brief for this unit is in the Google Classroom 'Developmental Ungraded Units, and you will be given access to this remote learning space during your application process.
Professional Behaviours	3	This is an ungraded unit so you can only achieve this at pass level. You complete this unit as your initial assesment before joining us. The assignment brief for this unit is in the Google Classroom 'Developmental Ungraded Units, and you will be given access to this remote learning space during your application process.
Personal Development: Applying to HE	3	This is an ungraded unit so you can only achieve this at pass level. You can achive this unit alongside your application to university. The assignment brief for this unit is in the Google Classroom 'Developmental Ungraded Units, and you will be given access to this remote learning space during your application process.
Psychological Trauma	3	This is the first curriculum based unit of study that you will do and it gives a basis of understanding of the differing approaches to explaining psychological trauma. It will also introduce PTSD and the diagnostic tools used for treatment, looking specifically at EMDR and TFCBT. It is an ungraded unit.
Sociological Theory	3	This is your first graded unit and you can achieve it at a Pass, Merit or Distinction. You will explore the early theorists within the sociology discipline and discuss more contemporary perspectives such as Marxism, Functionalism and Interractionism. It is a good idea to arrange a tutorial with your tutor when you have undertaken the reading for this unit. He or she will then help you to understand how the system of grading works. Please also look at the Handbook for our Access to Higher Education Diplomas.
Race in British Society	3	This is a graded unit and you can achieve it at a Pass, Merit or Distinction. The aim of this unit is to encoruage understanding of the terms 'race' and 'ethnicity' from biological perspectives and from race being a social

		construct. You will be expected to draw conclusions relating to inequalities between ethnic groups and evaluate the sociological perspectives that seek to explain them.
Stereotyping, Prejudice and Discrimination	3	<p>This is a graded unit and you can achieve it at a Pass, Merit or Distinction.</p> <p>What is the nature of stereotyping and attitude formation? This unit will encourage you to seek understanding of this and the nature and causes of prejudice and discrimination. You will also be expected to draw conclusions around the possible effects of prejudice and discrimination and the mechanisms involved in attitudinal change.</p>
Access to Healthcare in Modern Britain	3	<p>This is a graded unit and you can achieve it at a Pass, Merit or Distinction.</p> <p>Within this unit you will explore and identify health and illness as both social and biological constructs. The aim will be to evaluate the reasons for differences in patterns of illness in modern Britain and understand the factors affecting healthcare.</p>
Ethical Issues in Health	3	<p>This is a graded unit and you can achieve it at a Pass, Merit or Distinction.</p> <p>This unit will explore theories of moral philosophy and their application in the provision of health care. You will develop an understanding of the moral framework and decision making in medical practice and identify how ethical considerations impinge on patient/client rights and responsibilities.</p>
Psychological Approaches & Applications	6	<p>This is a graded unit and you can achieve it at a Pass, Merit or Distinction.</p> <p>This unit will explore and evaluate a range of psychological approaches and then analyse how those approaches are applied to explain and treat psychological illness.</p>
Memory	3	<p>This is a graded unit and you can achieve it at a Pass, Merit or Distinction.</p> <p>A key aim of this unit is to develop an understanding of the different models of memory, for example, long and short term. You will also gain insight into the different techniques used to study memory and the causes of memory loss.</p>
Concepts of Normality and Mental Health	3	<p>This is a graded unit and you can achieve it at a Pass, Merit or Distinction.</p> <p>The unit will encourage you to understand concepts of normality and mental health using specific examples to critically discuss the difficulties associated with normality. In addition you will study models that seek to explain atypical behaviour and form a basis of understanding relating to therapies and treatments.</p>

Biosychology of Stress	3	<p>This is a graded unit and you can achieve it at a Pass, Merit or Distinction.</p> <p>The study of this unit will facilitate understanding of how the nervous and endocrine systems are involved in the control of behaviour. Furthermore, the causes and consequences of stress will be explored.</p>
Early Social Development	3	<p>This is a graded unit and you can achieve it at a Pass, Merit or Distinction.</p> <p>This unit will focus on theories of attachment and the stages of socialisation in infants and children. It will encourage you to explore the different development and attachment bonds and evaluate the maternal deprivation hypothesis.</p>
Personality Theory	3	<p>This is a graded unit and you can achieve it at a Pass, Merit or Distinction.</p> <p>You will explore the main theories of personality theories and develop an understanding of some of the key methods used to describe and measure personality.</p>
Non-verbal Communication	3	<p>This is a graded unit and you can achieve it at a Pass, Merit or Distinction.</p> <p>From studying this unit you will develop a clear understanding of non-verbal communication and learn how to interpret non-verbal signals. In addition, you will evaluate the advantages and disadvantages of methods used in the the study of NVC.</p>
Social Influence and Independence	3	<p>This is a graded unit and you can achieve it at a Pass, Merit or Distinction.</p> <p>You will learn how an individual's behaviour is influenced by others, for example, compliance, identification and internalisation. You will also gain an understanding of the nature of social interaction and identify models that help to explain either an increase or decrease in independent behaviour</p>
The Nature-Nurture Debate	3	<p>This is a graded unit and you can achieve it at a Pass, Merit or Distinction.</p> <p>You will become familiar with the general features of the nature-nurture debate which seeks to explain the extent to which individuals are either born or made. You will also explore how this has been applied to human behaviour in terms of gender differences.</p>

Progression Information

From the above diploma you might expect to apply for undergraduate programmes in the following areas:

- Psychotherapist
- Educational Psychologist
- Clinical Psychologist
- Counselling Psychologist
- Forensic Psychologist
- Sport Psychologist
- Life Coach
- Mediator
- Play Therapist

Students from the above diplomas have been successful in gaining places at the following universities

University of Sheffield

University of Bristol

University of Glasgow

John Moores University in Liverpool

University of Manchester

University of Herefordshire

Lancaster University

University of East Anglia

Leicester University

Middlesex University

University of Liverpool

Sheffield Hallam University

University of Essex

Bath Spa University

Progression beyond your degree

A degree in psychology can lead to a number of progression areas beyond undergraduate study. You may choose to continue with your academic career and progress on to MA studies or your PhD. However, there are also some known careers you may move into and they are:

- Psychotherapist
- Educational Psychologist
- Clinical Psychologist
- Counselling Psychologist
- Forensic Psychologist
- Occupational Psychologist
- Life Coach
- Mediator
- Play Therapist
- Research Scientist/Academic Researcher

Testimonials of Learners

These testimonials are taken from learners who have completed a psychology based diploma with us.

“My tutor was always at the end of an email and I was staggered how quickly she responded! I had a number of one-to-one tutorials that felt like I had my own teacher and totally bespoke support. My tutorials were recorded which meant I could listen to them again and this really helps me to understand the subject and complete my assignments. I would strongly recommend Return to Learning Ltd for an online diploma.” (Jodie)

“I was really panicking about returning to study as I had left school with very poor GCSE’s and no A levels. It was hard, I am not going to lie, but the support was really there. The materials in the google classrooms were excellent and all I needed to complete my diploma. In addition, I had one-to-one support when I needed it, even at the weekend. Support with my application to university was provided and I am now about to start a degree in psychology at Sheffield University!” (Ali)

WOW! Great course, great learning materials and great support from Sam and her team. Highly recommended, don’t wait, contact them today!” (Ben)

Your Next Steps to Joining Us

You will have been sent **two** things following your initial enquiry

1. **An application form** – please return to samantha@returntolearningonline.com as soon as possible. This does not commit you to the course but gives our administration office a chance to start your files and related paperwork. It also registers your interest. Should you decide not to join your application form will be held in a vaulted file for 3 years and then destroyed. Your data is not at risk.
2. **An option to book in for a tutorial** – this is an informal chat that enables us to discuss your chosen diploma with you and respond to any questions you may have. There is no pressure to make a decision following this tutorial as joining a life changing programme, such as this, is a big step. We know that and will give you as much time as you need to make the right decision for you. If you did not get the link, here it is <https://calendly.com/samantha-410returntolearning/progress-reviews>

After your tutorial you may decide to progress onto the next stage, which is:

1. **Completing an Initial Assessment** – this is not a test, or a pass or fail scenario but it does allow you to see how you might work remotely and online. The assessment is based around a unit on all diplomas, that of Professional Behaviours. It consists of seven tasks on the topic area of communication with some activities aimed at supporting managing your studies and mental health. If you complete this initial assessment and decide not to join us, that is not a problem. However, if you do want to enrol, this is what will come next.
2. You will be sent a **Next Steps email** – this email will give you a step by step guide of what happens next and includes:
 - a) Feedback from the initial assessment, highlighting what you have done well and any potential areas for development
 - b) Payment plans and proposals
 - c) Information on how to start your UCAS application form
 - d) A link to the first curriculum unit on your diploma with a target deadline
 - e) An introduction to your Curriculum Tutor – this will prompt them to get in touch to help and support you in your academic journey with us
 - f) An invitation to an Induction via Zoom – these normally take place in the evening and enable us to take you through some of the key aspects of your diploma now you have decided to join us.

Please do not hesitate to contact Sam on samantha@returntolearningonline.com or 07875710049 should you have any further questions.

We look forward to hearing from you and helping you achieve your dream of going to university.

The Access Curriculum Teaching Team