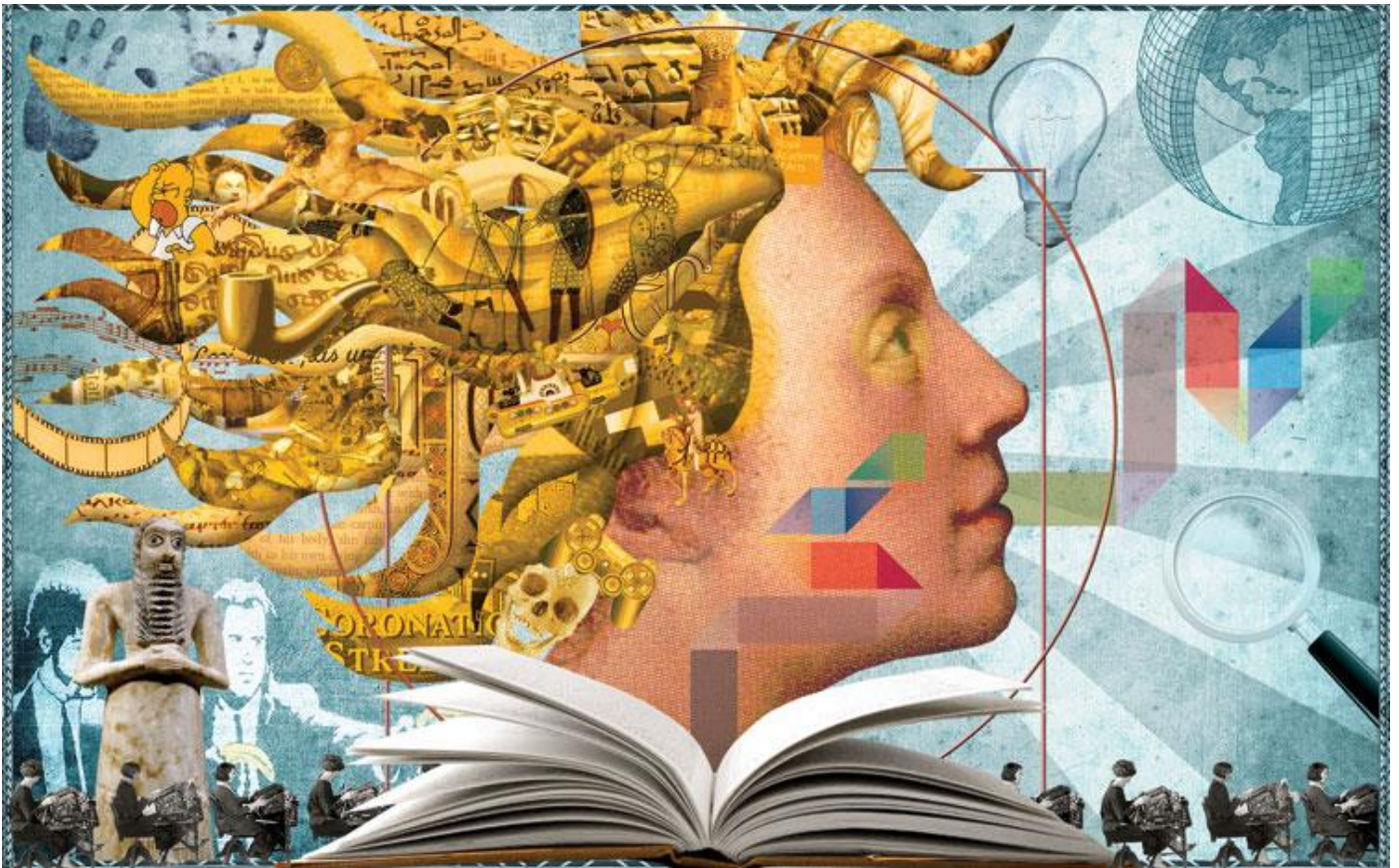


Specification Social Science Based Diplomas



Thank you for enquiring about our Access to Higher Education Diplomas in Humanities and Social Science based subjects. We offer 3 Diplomas in this curriculum area and below you will find the following:

1. The detail of the units you would study on each pathway

| | |
|---------------------------|-----------|
| Social Science | Pages 3-5 |
| Sociology and Criminology | Pages 6-8 |

2. Progression information Pages 9-10

3. Testimonials from our learners Page 10

4. Your next steps to joining us Page 11

Social Science

Qualification Code: 40011537

| Unit of Study | Unit Value | Achievement & Comments |
|--|------------|--|
| Communication: Academic Essay Writing [3] | 3 | This is an ungraded unit so you can only achieve this at pass level. To achieve this you must create 3 essay plans and submit them to your tutor. The assignment brief for this unit is in the Google Classroom 'Developmental Ungraded Units, and you will be given access to this remote learning space during your application process. |
| Communication: Presentation Skills [3] | 3 | This is an ungraded unit so you can only achieve this at pass level. To achieve this you must undertake one oral presentation of a unit of study. The assignment brief for this unit is in the Google Classroom 'Developmental Ungraded Units, and you will be given access to this remote learning space during your application process. |
| Professional Behaviours | 3 | This is an ungraded unit so you can only achieve this at pass level. You complete this unit as your initial assesment before joining us. The assignment brief for this unit is in the Google Classroom 'Developmental Ungraded Units, and you will be given access to this remote learning space during your application process. |
| Personal Development: Applying to HE | 3 | This is an ungraded unit so you can only achieve this at pass level. You can achive this unit alongside your application to university. The assignment brief for this unit is in the Google Classroom 'Developmental Ungraded Units, and you will be given access to this remote learning space during your application process. |
| Sociological Theory | 3 | This is the first curriculum based unit of study that you will do and it gives a basis of understanding of the origins of sociology as a discipline. You will explore the early theorists of sociology and discuss more contemporary perspectives such as Marxism, Functionalism and Interractionism. The unit is ungraded so you can only achieve a pass. |
| Key Traditions in Political Philosophy | 3 | <p>This is your first graded unit and you can achieve it at a Pass, Merit or Distinction. It is a good idea to arrange a tutorial with your tutor when you have undertaken the reading for this unit. He or she will then help you to understand how the system of grading works. Please also look at the Handbook for our Access to Higher Education Diplomas.</p> <p>This unit explores and evaluates three key political philosophies pivotal in European and Western development. That is Liberalism, Socialism and Feminism. Understanding of these is really the foundation stone of understanding British and European development from the 18th century onwards and is particularly useful in helping to grasp the role of the state as the western world becomes more complex due to industrial development.</p> |
| History of Social Policy | 3 | This is a graded unit and you can achieve it at a Pass, Merit or Distinction. |

| | | |
|--|----------|---|
| | | This unit will encourage you to evaluate and analyse attitudes to poverty from 1834 to Thatcherism. Did Britain gain more tolerance and understanding of the poor during this period and what policies were put in place to help those vulnerable to economic change? |
| Exploring Social Policy | 3 | This is a graded unit and you can achieve it at a Pass, Merit or Distinction. You will study this unit in conjunction with the Birth of the Modern British State and, essentially, they focus on changes and development that led for the birth of a full welfare state following the Second World War. But what factors led to this? Were they push or pull factors, that is what were the governmental motivations for change? |
| The Birth of the Modern British State | 3 | This is a graded unit and you can achieve it at a Pass, Merit or Distinction. See above. |
| Social Stratification and Inequality | 3 | This is a graded unit and you can achieve it at a Pass, Merit or Distinction. In this unit you will explore how various societies are divided, the most common in the west is by social class. However, other divisions or strata include the Caste system and Apartheid. You will evaluate the effect of these upon life chances of the individuals living within them. For example, are life chances in terms of health or education limited? |
| Poverty in Contemporary Britain | 3 | This is a graded unit and you can achieve it at a Pass, Merit or Distinction. You will have already studied some aspects of poverty with the above units on exploring social policy and the birth of the British modern state. However, the focus here is on contemporary poverty and the sociological and political explanations of its continued existence. You will deliver this unit via an oral presentation and this will enable you to claim the ungraded unit 'Presentation Skills.' |
| Public Health | 3 | This is a graded unit and you can achieve it at a Pass, Merit or Distinction. Your focus within this unit is on the development of public health and this begins in the 19 th century. You will evaluate the importance of John Snow, and Dr Duncan. Reports commissioned such as by Chadwick, Black and Marmot will form your own report of understanding the health care inequalities on contemporary Britain. |
| Access to Healthcare in British Society | 3 | This is a graded unit and you can achieve it at a Pass, Merit or Distinction. Within this unit you will explore and identify health and illness as both social and biological constructs. The aim will be to evaluate the reasons for differences in patterns of illness in modern Britain and understand the factors affecting healthcare. |
| Sociology of the Family in Modern Britain | 3 | This is a graded unit and you can achieve it at a Pass, Merit or Distinction. |

| | | |
|---|----------|--|
| | | There is no doubt that family life has changed significantly since the Second World War. You will explore some of those key changes and evaluate the sociological perspectives that seek to understand them. |
| Education and Social Inequality | 3 | <p>This is a graded unit and you can achieve it at a Pass, Merit or Distinction.</p> <p>The focus of this unit is the exploration of changes within education policy since 1944, so you will discuss the tripartite system, comprehensive education and then the marketisation of education from the mid 1980's. Alongside this you will draw conclusions on the functionalist and Marxist perspectives of the functions of education.</p> |
| Liverpool and the Atlantic Slave Trade | 3 | <p>This is a graded unit and you can achieve it at a Pass, Merit or Distinction.</p> <p>The Slave Trade played a pivotal role in the industrial revolution but at what cost? You will be encouraged to explore this with particular reference to Liverpool. In addition, you will also evaluate this triangular trade and its abolition.</p> |
| Race in British Society | 3 | <p>This is a graded unit and you can achieve it at a Pass, Merit or Distinction.</p> <p>The aim of this unit is to encourage understanding of the terms 'race' and 'ethnicity' from biological perspectives and from race being a social construct. You will be expected to draw conclusions relating to inequalities between ethnic groups and evaluate the sociological perspectives that seek to explain them.</p> |
| Psychological Approaches and Applications | 6 | <p>This is a graded unit and you can achieve it at a Pass, Merit or Distinction.</p> <p>This unit will explore and evaluate a range of psychological approaches and then analyse how those approaches are applied to explain and treat psychological illness.</p> |
| Stereotyping, Prejudice and Discrimination | 3 | <p>This is a graded unit and you can achieve it at a Pass, Merit or Distinction.</p> <p>What is the nature of stereotyping and attitude formation? This unit will encourage you to seek understanding of this and the nature and causes of prejudice and discrimination. You will also be expected to draw conclusions around the possible effects of prejudice and discrimination and the mechanisms involved in attitudinal change.</p> |

Sociology and Criminology

Qualification Code: 40009130

| Unit of Study | Unit Value | Achievement & Comments |
|--|------------|---|
| Communication: Academic Essay Writing [3] | 3 | This is an ungraded unit so you can only achieve this at pass level. To achieve this you must create 3 essay plans and submit them to your tutor. The assignment brief for this unit is in the Google Classroom 'Developmental Ungraded Units, and you will be given access to this remote learning space during your application process. |
| Communication: Presentation Skills [3] | 3 | This is an ungraded unit so you can only achieve this at pass level. To achieve this you must undertake one oral presentation of a unit of study. The assignment brief for this unit is in the Google Classroom 'Developmental Ungraded Units, and you will be given access to this remote learning space during your application process. |
| Professional Behaviours | 3 | This is an ungraded unit so you can only achieve this at pass level. You complete this unit as your initial assesment before joining us. The assignment brief for this unit is in the Google Classroom 'Developmental Ungraded Units, and you will be given access to this remote learning space during your application process. |
| Personal Development: Applying to HE | 3 | This is an ungraded unit so you can only achieve this at pass level. You can achive this unit alongside your application to university. The assignment brief for this unit is in the Google Classroom 'Developmental Ungraded Units, and you will be given access to this remote learning space during your application process. |
| Sociological Theory | 3 | This is the first curriculum based unit of study that you will do and it gives a basis of understanding of the origins of sociology as a discipline. You will explore the early theorists of sociology and discuss more contemporary perspectives such as Marxism, Functionalism and Interractionism. The unit is ungraded so you can only achieve a pass. |
| History of Social Policy | 3 | This is your first graded unit and you can achieve it at a Pass, Merit or Distinction. It is a good idea to arrange a tutorial with your tutor when you have undertaken the reading for this unit. He or she will then help you to understand how the system of grading works. Please also look at the Handbook for our Access to Higher Education Diplomas. This unit will encourage you to evaluate and analyse attitudes to poverty from 1834 to Thatcherism. Did Britain gain more tolerance and understanding of the poor during this period and what policies were put in place to help those vulnerable to economic change? |
| Exploring Social Policy | 3 | This is a graded unit and you can achieve it at a Pass, Merit or Distinction. This unit will encourage understanding of what social policy is and how it is put into practice. In doing so you will explore the major milestones to the development of a British welfare state and undertand the relationship between social policy and political beliefs. |

| | | |
|---|----------|--|
| Poverty in Contemporary Britain | 3 | <p>This is a graded unit and you can achieve it at a Pass, Merit or Distinction.</p> <p>You will have already studied some aspects of poverty with the above units on exploring social policy and the birth of the British modern state. However, the focus here is on contemporary poverty and the sociological and political explanations of its continued existence. You will deliver this unit via an oral presentation and this will enable you to claim the ungraded unit 'Presentation Skills.'</p> |
| Social Stratification and Inequality | 3 | <p>This is a graded unit and you can achieve it at a Pass, Merit or Distinction.</p> <p>In this unit you will explore how various societies are divided, the most common in the west is by social class. However, other divisions or strata include the Caste system and Apartheid. You will evaluate the effect of these upon life chances of the individuals living within them. For example, are life chances in terms of health or education limited?</p> |
| Sociology of the Family in Modern Britain | 3 | <p>This is a graded unit and you can achieve it at a Pass, Merit or Distinction.</p> <p>There is no doubt that family life has changed significantly since the Second World War. You will explore some of those key changes and evaluate the sociological perspectives that seek to understand them.</p> |
| The Origins of Criminology | 3 | <p>This is a graded unit and you can achieve it at a Pass, Merit or Distinction.</p> <p>This unit will encourage understanding of the key elements of early criminology by looking at the influence of positivism and early ideas about criminality. You will also draw conclusions around the emergence of the discipline of criminology in Britain.</p> |
| Theories & Perspectives of Criminology | 6 | <p>This is a graded unit and you can achieve it at a Pass, Merit or Distinction.</p> <p>Within this unit you will explore biological and contemporary explanation of crime. Furthermore, you will analyse psychological and sociological approaches to understanding criminal behaviour.</p> |
| Politics and Society | 3 | <p>This is a graded unit and you can achieve it at a Pass, Merit or Distinction.</p> <p>Within this unit you will develop an understanding of the nature of democracy and the party system within British politics. You will also be able to draw conclusions around voting behaviour and the impact of the EU on British politics.</p> |
| Legal Institutions in England and Wales | 3 | <p>This is a graded unit and you can achieve it at a Pass, Merit or Distinction.</p> <p>What is the role of civil courts in England and Wales? You will discover that within this unit alongside understanding the role of criminal courts. This will provide an holistic view of the legal institutions in England and Wales.</p> |

| | | |
|---|----------|--|
| Police Powers in England and Wales | 3 | <p>This is a graded unit and you can achieve it at a Pass, Merit or Distinction.</p> <p>This unit will help you to understand the powers of police in relation to investigation of offences in England and Wales. It will explore the rules relating to stop and search and link these to criticism of this use with regard to ethnic minorities. You will be able to draw conclusions around detention powers and questioning suspects.</p> |
| The Criminal Process | 3 | <p>This is a graded unit and you can achieve it at a Pass, Merit or Distinction.</p> <p>What are the rules that govern the operation of criminal courts? You will explore the constitution and jurisdiction alongside the criticisms of criminal court operation. The unit will also develop your understanding around the principles of governing and sentencing by exploring the aims, purposes and objectives of sentencing policies.</p> |
| The Jury System | 3 | <p>This is a graded unit and you can achieve it at a Pass, Merit or Distinction.</p> <p>This unit will discuss the qualifications, ineligibility and excusals of a person available for jury service. It will explore the role of juries in both civil and criminal court and encourage you to evaluate the proposed reforms to the jury system.</p> |
| Property Offences | 3 | <p>This is a graded unit and you can achieve it at a Pass, Merit or Distinction.</p> <p>You will be expected to draw conclusions and evaluate the law relating to property offences by explaining the legal meanings of robbery, theft and burglary. You will explore the 'right to property' and be able to explain literal, golden and mischief rule.</p> |
| Homicide | 3 | <p>This is a graded unit and you can achieve it at a Pass, Merit or Distinction.</p> <p>This unit will develop your understanding of legal principles relating to homicide. What is meant by <i>actus reus</i> and <i>mens rea</i> when relating to murder? You will explore how legal principles relating to homicide are applied and develop an understanding of sentencing options.</p> |

Progression Information

From the above diplomas you might expect to apply for undergraduate programmes in the following areas:

- Humanities
- Social Studies
- Modern History
- International Relations
- Social Work
- Politics
- Criminology
- Probation Studies/Work
- Criminal Law
- Counselling & Psychotherapy
- Psychology
- Counselling Studies

Students from the above diplomas have been successful in gaining places at the following universities

University of Birmingham

University of Bristol

University of Exeter

Kingston University

University of Manchester

University of Sheffield

Keele University

Liverpool John Moores University

Manchester Metropolitan University

Middlesex University

University of Liverpool

Anglia Ruskin University

Buckingham New University

University of Bedfordshire

Progression beyond your degree

There are a number of careers that you may engage with following a degree in one of the above areas:

- **Recruitment and HR** – with skills of understanding society and those who live within it you may well choose the channel that into management training; occupational health; HR assistant or manager; recruitment and engagement; equality and diversity and general support of employees within an organisation.
- **Education** – you may decide to continue within the curriculum of your degree and motivate others to engage with it via teaching and lecturing. You may need to progress onto a PGCE but could find yourself in a classroom in a timely manner following graduation.
- **Law & Probation**– you may decide to specialise in supporting and guiding others through the legal system and/or work within criminal justice, for example, probation or prison officer. You could become a paralegal or continue studies into becoming a solicitor or barrister. You might choose to join the police force or other uniformed services.

- **Social Care** – there are many career areas you could consider following your graduation. For example, social worker, support worker, youth worker. Or you may go into the field of mental health support, working with children or within the wider community.
- **Charity** – you might consider being a funding co-ordinator, a helpline worker or a policy researcher.
- **Politics** – some graduates have chosen to try and make a difference at local and national government level by engaging with politics. Seeking to change systems from the top down and embracing research and development to improve lives within British society.
- **Life Coach** – this might appeal should you have specialised in individual welfare and human resources.

Testimonials of Learners

These testimonials are taken from learners who have completed a Humanities and Social Science based diploma with us.

“Personally I found this Access to HE course suited me down to the ground. The course is what you make of it and allows you the flexibility to complete at a pace that works around your life. I found the content was fantastic and each work book was filled with so much quality information which made the assessments very achievable. Time management has been key to completing the course but as long as you organise this around your lifestyle it is absolutely manageable. The feedback and tutor support has been a highlight of the course for me. Sometimes online courses can lack appeal due to the fear of not having a point of contact or help whenever you need it, however, Sam has been a text message/phone call/zoom chat away whenever any support has been needed and this really made the course worthwhile. One bit of advice to other learners would be to always keep in mind your end goal and why you decided to apply for the course. Sometimes it can be easy to let life get in the way and lose a bit of motivation so keeping your goal in mind just gives you that boost of determination to keep on going. All in all, I have found this course has given me the opportunity to achieve what I didn’t think I could and has offered me a way into higher education that I didn’t even know was possible after high school and that feels amazing.”

Holly

“This course had been absolutely brilliant and has boosted my confidence academically. Sam was able to understand my strengths and weaknesses quickly and encouraged me to work on my negatives, to allow me to improve my work. From Sam’s techniques of understanding on how I learn best, I have been able to improve my academic ability and feel confident about University.”

Kareem

“Overall, I can confidently say that I enjoyed my assignments and feel I have gained vast insight into important historical subjects and contemporary issues and philosophies. Opportunities to present my work in varied forms e.g., presentations, reports and essays, has prepared me for a variety of assessment methods when I go to university.” **Hannah**

“My tutor, Sam, was positive and knowledgeable from start to finish, whilst also trusting in my ability to complete the assignment or ask for help – an approach which really worked well for me! Not once did I feel lost or alone, despite working remotely in a pandemic! If you are a willing to put in the hard work, ask for help from these lovely people when you need it, and WANT to further your horizons I would 100% recommend this pathway.” **Dylan**

Your Next Steps to Joining Us

You will have been sent **two** things following your initial enquiry

1. **An application form** – please return to samantha@returntolearningonline.com as soon as possible. This does not commit you to the course but gives our administration office a chance to start your files and related paperwork. It also registers your interest. Should you decide not to join your application form will be held in a vaulted file for 3 years and then destroyed. Your data is not at risk.
2. **An option to book in for a tutorial** – this is an informal chat that enables us to discuss your chosen diploma with you and respond to any questions you may have. There is no pressure to make a decision following this tutorial as joining a life changing programme, such as this, is a big step. We know that and will give you as much time as you need to make the right decision for you. If you did not get the link, here it is <https://calendly.com/samantha-410returntolearning/progress-reviews>

After your tutorial you may decide to progress onto the next stage, which is:

1. **Completing an Initial Assessment** – this is not a test, or a pass or fail scenario but it does allow you to see how you might work remotely and online. The assessment is based around a unit on all diplomas, that of Professional Behaviours. It consists of seven tasks on the topic area of communication with some activities aimed at supporting managing your studies and mental health. If you complete this initial assessment and decide not to join us, that is not a problem. However, if you do want to enrol, this is what will come next.
2. You will be sent a **Next Steps email** – this email will give you a step by step guide of what happens next and includes:
 - a) Feedback from the initial assessment, highlighting what you have done well and any potential areas for development
 - b) Payment plans and proposals
 - c) Information on how to start your UCAS application form
 - d) A link to the first curriculum unit on your diploma with a target deadline
 - e) An introduction to your Curriculum Tutor – this will prompt them to get in touch to help and support you in your academic journey with us
 - f) An invitation to an Induction via Zoom – these normally take place in the evening and enable us to take you through some of the key aspects of your diploma now you have decided to join us.

Please do not hesitate to contact Sam on samantha@returntolearningonline.com or 07875710049 should you have any further questions.

We look forward to hearing from you and helping you achieve your dream of going to university.

The Access Curriculum Teaching Team